

What is Cor-Vent®?

A passive Roof Ventilation device with compliance to Code NCC2022 ABCB housing Provision Part 10.8.3 & Vol1 F8D5 requirements. Designed to allow passive airflow over fascia and under pliable membrane (sarking), blanket and foil or flashing to reduce the risk of moisture and condensation in the roof attic.

Features

- Applies to ventilation requirements for climate zones 6, 7 & 8
- Designed for roof pitch ranging from 0 to 15 degrees
- BAL FR grade to AS1530.3 (BAL 12.5 ~ BAL 29) with aluminium mesh
- Light weight and engineered from Corflute®
- Made from recyclable polypropylene(PP)
- Easy to install and offered in lengths up to 2.5 meters
- Can be screwed or bonded to battens or rafters.
- Additional 10mm Corflute® packer strip can be added to make up overall batten height of 40mm.

PROUDLY
Australian



scan me

25K FR-BAL

25K STANDARD WITH 10mm PACKER

Roof Space Ventilation Requirements

Roof pitch	Ventilation openings
≥ 0° to < 15°	Up to 25000 mm ² /m along the opposing ends

Dimensions

Product	Thickness (mm)	Width (mm)	Length (mm)	Weight (kg)	Ventilation Minimum Free open area (mm ² /m)
Cor-Vent® 25K 100	31	100	2500	1.4	25,000
Cor-Vent® 25K 120	31	120	2500	1.8	25,000
Cor-Vent® 25K 50	31	50	2500	0.7	25,000
Cor-Vent® 25K FR BAL 50	31	50	2500	0.7	25,000
Cor-Vent® 25K FR BAL 100	31	100	1200	1.6	25,000
Cor-Vent® 25K FR BAL 120	31	120	1200	2.0	25,000
Cor-Vent® 5K (high level)	6	100	2500	0.3	5,050
Cor-Vent® 10mm Packer	10	50	2500	0.25	N/A

- Cor-Vent 25K meets DTS 25000mm²/m installed along the opposing ends for skillion roof < 10°.
- Cor-Vent 25K meets DTS 25000mm²/m installed along the low level of the roof in conjunction with Cor-Vent 5K on high level for roof pitch < 10° ~ 15°.
- Bespoke widths and lengths also available on request.

Roof Details	Roof Pitch	Profile Type	
	0° - 15°	Open	Corrugated
Membrane function	Type	Foil or B&F	
	Function	Thermal and Condensation Control	

Cor-Vent® 25K - Low Pitch Vent Installation

- Cor-Vent® 25K should be screwed to rafters with low profile headed fasteners (rec Class 3). Screw flush or slightly below top face of Cor-Vent®. Minimum 3 places along the length of Cor-Vent® Strip
- Cor-Vent can be cut to size with a Stanley knife or cutting tool.
- Sarking is laid over the Cor-Vent® as shown.

Compliance Summary NCC2022 10.8.3

Working installation and reference calculations for Cor-Vent 25K Low Pitch Ventilation. Example – Skillion Roof < 10°

- 25000mm²/m Ventilation opening required Low and High Level on opposing ends.

Working installation and reference calculations for Cor-Vent 25K Low Pitch Ventilation. Example – Skillion Roof 10°~15°

- Low level 25000mm²/m & High level 1 x 5000mm²/m on opposing ends

Installation Method and Calculations - Low Pitched Roof

Roof Pitch < 10°

- Cor-Vent 25K meet DTS 25,000 mm²/m at each two opposing sides
- Cor-Vent 25K is rated @ 25,000mm²/m.

Roof open venting calculated as follow:

- DtS calculation: 25,000mm² x 20m x 2 = 1000,000mm².
- Cor-Vent 25K @ 25,000mm², therefore meets requirements for both high- & low-level ventilation.

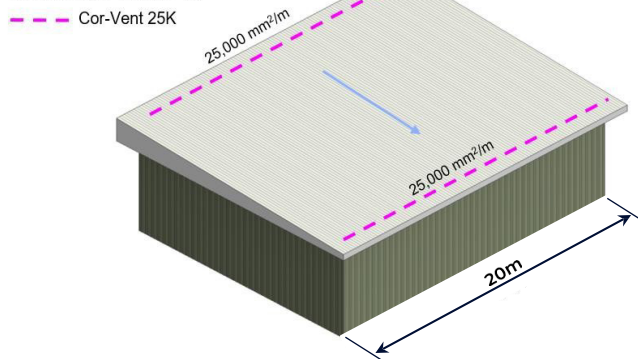
Roof Pitch 10° ~ 15°

- Cor-Vent 25K low level and Cor-Vent 5K high level installed along eaves at a high level.
- Cor-Vent 25K is rated @ 25,000mm²/m and Cor-Vent 5K is rated @ 5,000mm²/m

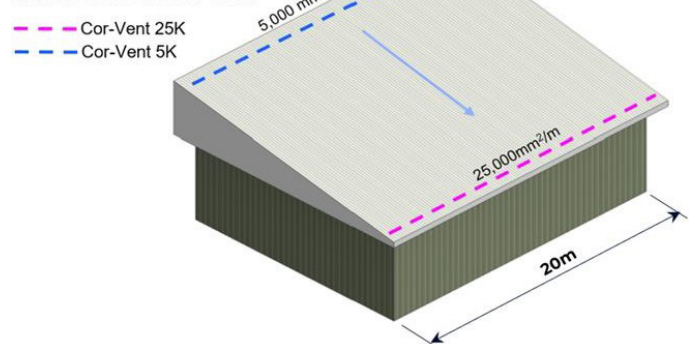
Low Pitched roof open vented calculated as follows:

- DtS calculation High level 5000mm²/m x 20m = 100,000mm²/m & low level 25000mm²/m x 20m = 500,000mm²/m
- Cor-Vent 5K @ 5050mm² x 20m = 101,000 mm²/m & Cor-Vent @ 25000mm² x 20m = 500,000mm²/m Cor-Vent can exceed NCC DtS requirements.

Skillion Roof Pitch < 10°



Skillion Roof Pitch 10° to 15°



Technical Data

Criteria	Test Method	Value
Compression strength	AS1301.429S	Min 600 KPA
Melting temperature	ASTM3418	165°C
Maximum working temperature		90°C
Spread of Flame Index (range 1-10)	AS1530.3	0
Smoke developed index (range 1-10)	AS1530.3	3
Heat evolved index (range 1-10)	AS1530.3	0
Ember protection	AS3959	Aluminium

Cor-Vent 25K BAL FR & Fire rate solutions

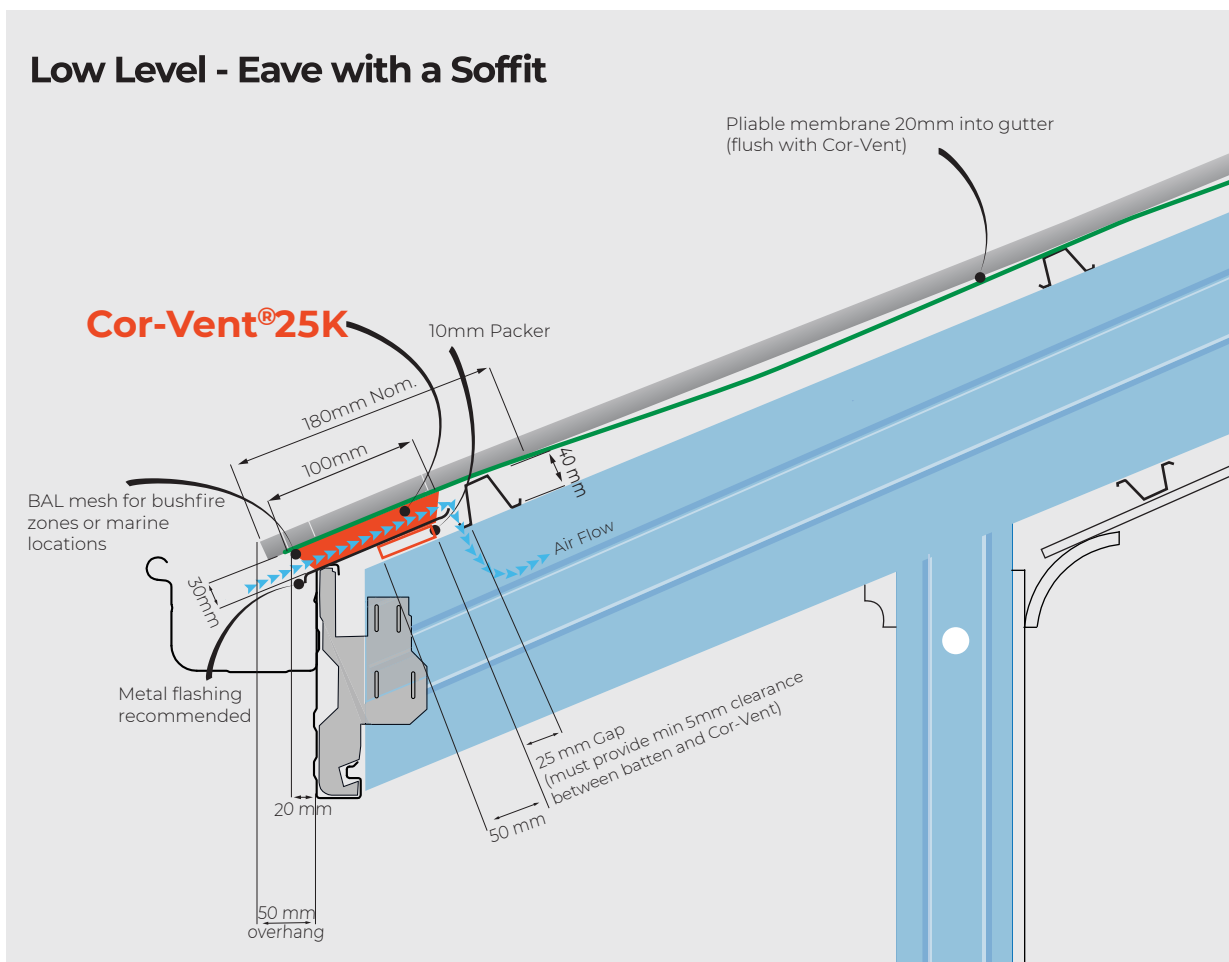
- Corex has developed a BAL rated fire-retardant solution.
- This is supplied with an aluminium ember mesh protection with less than 2mm aperture and complaint to clause 3.6 AS3959 (BAL 12.5 – BAL 29)
- Corex BAL/FR grade products have been validated to AS1530.3.
 - Spread of flame index 0
 - Smoke developed index 3
 - Heat evolved index 0

Working Installations: Examples and Schematics

Cor-Vent® 25 K Installed over Eave gutter

- Fix vent device with low profile headed fasteners, fixing below vent surface
- Roofing fastener length should be checked to ensure secure fixing to structure
- Ventilation pathway must be maintained
- Weather proofing must be maintained
- Available Cor-Vent Bal 12.5 ~ Bal 29 compliant solutions in designated bushfire zones.
- Recommend Bal mesh when construction in Marine locations also
- Packer strip of 10mm Corflute can sit under Cor-Vent® 25K
- Storm water management must be maintained when fascia height is dropped for 0°~15° roofing

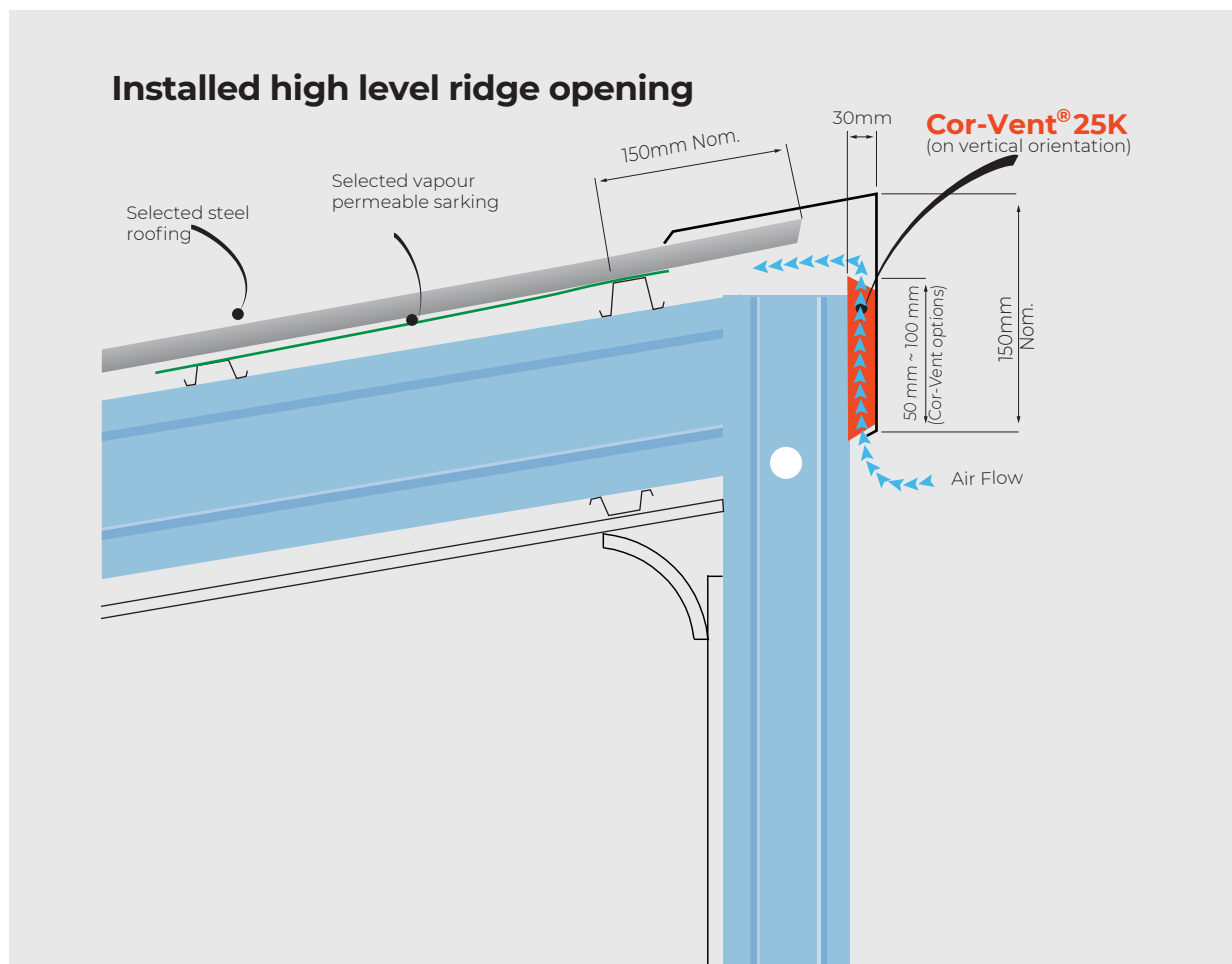
Low Level - Eave with a Soffit



Working Installations: Examples and Schematics

Cor-Vent® 25K Installed high level ridge opening

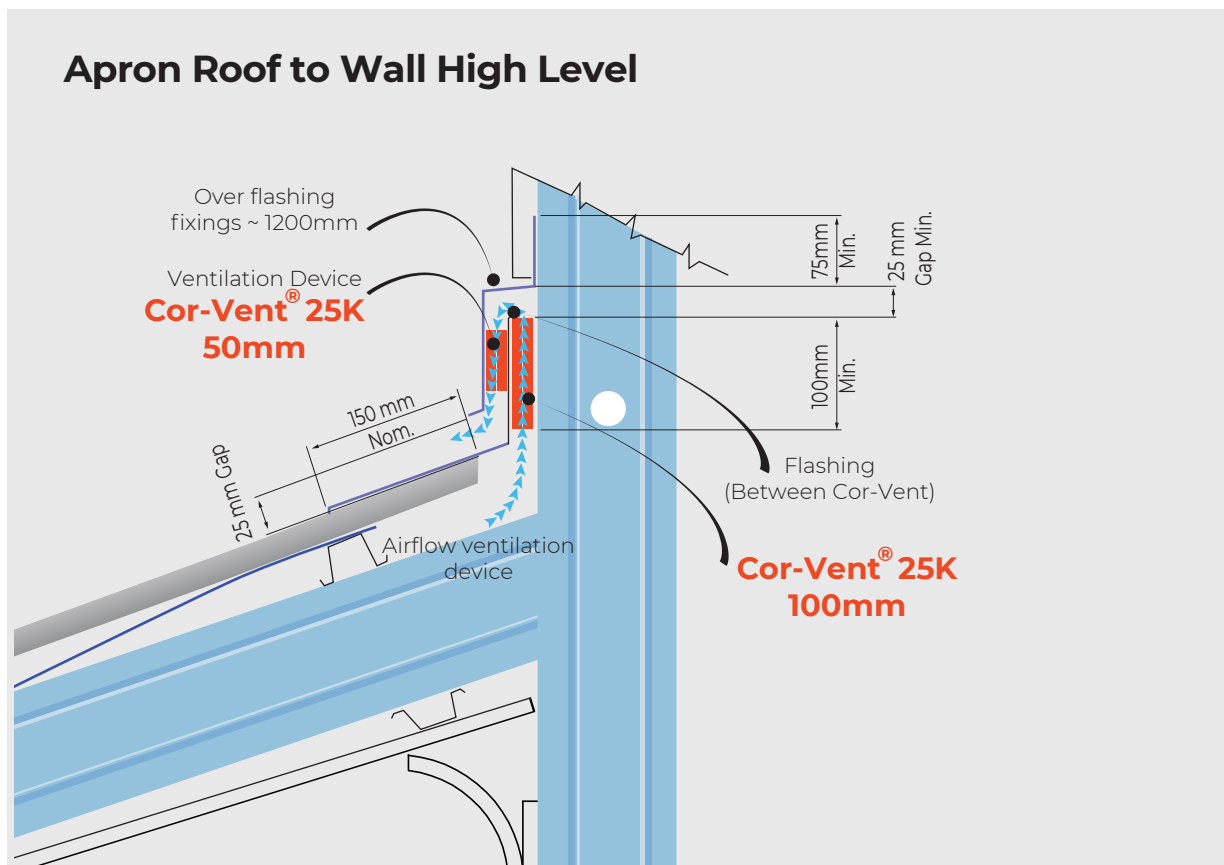
- Fix vent device with low profile headed fasteners, drive fixing below vent surface
- Roofing fastener length should be checked to ensure secure fixing to structure
- Ventilation pathway must be maintained through structure
- Weather proofing must be maintained
- Stormwater management must be maintained
- Available Cor-Vent Bal 12.5 ~ Bal 29 compliant solutions in designated bushfire zones
- Aluminium ember mesh aperture less than 2.0mm compliant with AS 3959
- Recommend Bal mesh when construction in marine locations



Working Installations: Examples and Schematics

Cor-Vent® 25 K Apron Roof to Wall High Level

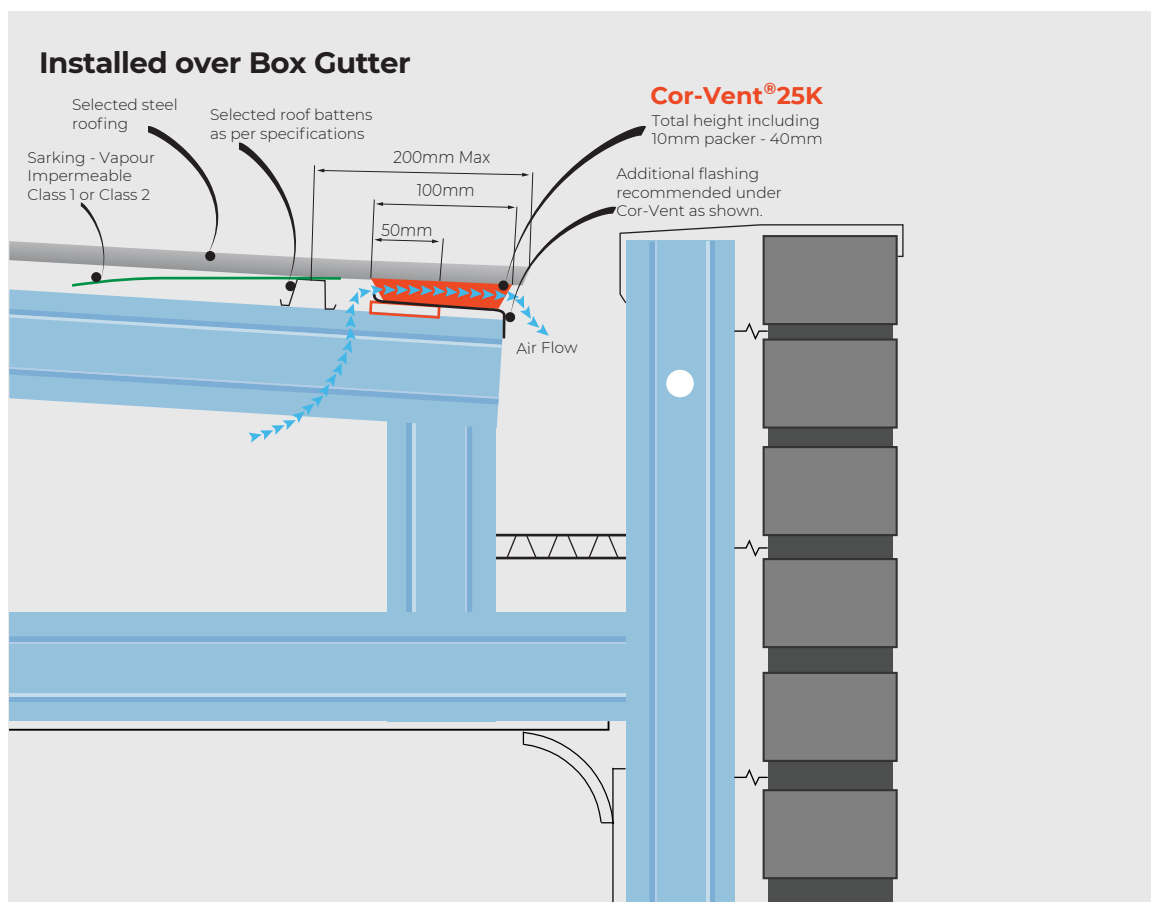
- Fix vent device with low profile headed fasteners, drive fixing below vent surface
- Roofing fastener length should be checked to ensure secure fixing to structure
- Ventilation pathway must be maintained through structure
- Weather proofing must be maintained
- Stormwater management must be considered when fascia heights are dropped for 0 - 15 degrees roofing



Working Installations: Examples and Schematics

Cor-Vent® 25K Installed over Box gutter (includes 10mm Corflute packer)

- Fix vent device with low profile headed fasteners, drive fixing below vent surface
- Fastener length should be checked to ensure secure fixing to structure
- Ventilation pathway must be maintained through structure
- Weather proofing must be maintained
- Available Cor-Vent Bal 12.5~Bal 29 compliant solutions in designated bush fire zones
- Encapsulated Aluminium ember mesh with Mesh aperture less than 2.0mm meets compliance with AS3959. Recommend Bal mesh when construction in marine location
- Packer strip of 10mm Corflute can sit under Cor-Vent® 25K



Corex Plastics (Australia) Pty. Ltd.

261 Frankston Dandenong Road, Dandenong 3175 AUSTRALIA

Phone: +61 3 9238 1300 | Email: hello@corex.com.au | Web: corex.com.au

All information is to the best of our knowledge, true and correct. However, as many factors outside our knowledge and control can effect the products, no warranty can be given or implied in respect of such information and no information should be construed as a warranty in relation to the product or its use.

